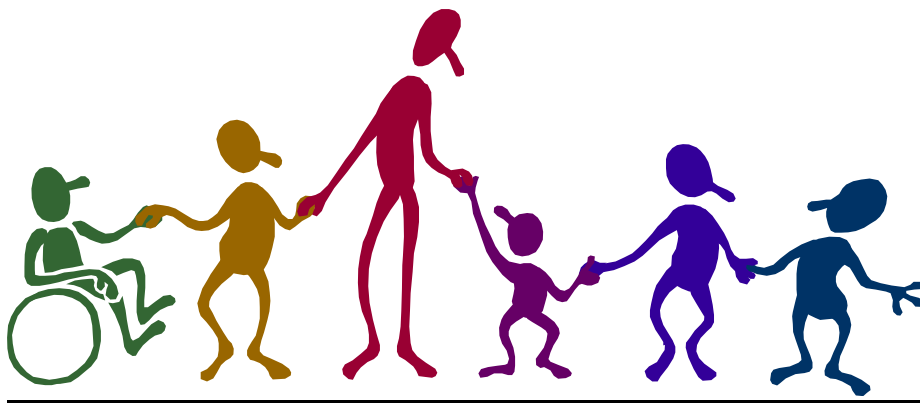


TOWNSHIP HIGH SCHOOL

DISTRICT 211

RESOURCE DIRECTORY



TOWNSHIP HIGH SCHOOL DISTRICT 211
LOCAL AREA RESOURCES

<u>COUNSELING.....</u>	<u>2</u>
<u>CRISIS INTERVENTION (DCFS/SASS).....</u>	<u>4</u>
<u>DEVELOPMENTAL DISABILITIES.....</u>	<u>5</u>
<u>DOMESTIC VIOLENCE/SEXUAL ASSAULT.....</u>	<u>6</u>
<u>EMPLOYMENT AID.....</u>	<u>6</u>
<u>FOOD PANTRIES.....</u>	<u>7</u>
<u>HEALTHCARE/INSURANCE.....</u>	<u>8</u>
<u>HOSPITALS.....</u>	<u>10</u>
<u>HOTLINES.....</u>	<u>11</u>
<u>LEGAL RESOURCES.....</u>	<u>12</u>
<u>LGBT SUPPORT.....</u>	<u>13</u>
<u>MENTORING AGENCIES.....</u>	<u>16</u>
<u>PREGNANCY/CHILDCARE.....</u>	<u>14</u>
<u>SHELTERS/HOUSING AID.....</u>	<u>15</u>
<u>SUBSTANCE ABUSE.....</u>	<u>16</u>
<u>TOWNSHIP/VILLAGE INFORMATION.....</u>	<u>18</u>

COUNSELING REFERRALS

Advanced Behavioral Solutions

847.413.9001

953 Plum Grove Road, Suite B

Schaumburg, IL 60173

<http://www.advancedbehavioralsolutions.com/>

Alexian Center for Mental Health

3350 Salt Creek Lane Ste. 114

Arlington Heights, IL. 60004

847.952.7460

(press 2 – intake coordinator)

Has a catchment area but will accept Medicaid insurance carriers if outside

www.alexian.org

Arbor Counseling Center

847.913-0393

2356 Hassell Rd. Suite L

Hoffman Estates, IL. 60195/ Buffalo Grove/Crystal Lake

<http://www.arborcounselingcenter.com/>

Bridge Youth and Family Services (sliding scale)

847.359.7490 (Leslie/ for assessment)

721 S. Quentin Rd., Palatine, 60067

2070 Rand Rd., Palatine, 60074

<http://bridgeyouth.org/>

Catholic Charities-North/Northwest Suburban Regional Services

847.376.2100

1717 Rand Rd.

DesPlaines, IL. 60016

www.catholiccharities.net

sliding scale counseling, shelter, emergency aid

Comprehensive Psychological Services (Dr. Frey, Dr. Frampton Dr.Stein)

847.632.0334

3233 N. Arlington Heights Rd.

Arlington Heights, IL.

<http://psych4kids.com/>

Counseling and Diagnostic Center of Woodfield – Quinn Brennan
 847.884.0210 Ext. 30
 1325 Wiley Road, Suite 165
 Schaumburg, IL 60173
<http://www.cdcwoodfield.com/>

Dubiel, Irena
 847.707.7776
 Schaumburg area, Polish speaking

Kenneth Young Center (sliding scale, some Medicaid)
 847.524.8800
 1001 Rohlwing Rd.
 Elk Grove Village, IL.
www.kennethyoung.org

Latino family Services
 847.593.7077
 657 E. Golf Suite 310
 Arlington Heights, IL.

Omni Youth Services
 847.353.1500
 1111 W. Lake-Cook Rd.
 Buffalo Grove, IL. 60089
www.omniyouth.org

Perakis, Resis, Woods & Associates – Barry Lipin
 847.240.2211 x230
 1701 E. Woodfield Rd., Suite 1000
 Schaumburg, IL.
www.prapsych.com

Salvation Army (sliding scale)
 847.392.0265
 1616 N. Arlington Heights Rd. St. 200

Spectrum Youth and Family Services
 847.884.6212
 1 Illinois Blvd. (Schaumburg Township Bldg.)
 Hoffman Estates, IL.
<http://www.schaumburgtownship.org/spectrum.html>(sliding scale counseling;
 free program for juveniles with legal history)

Streamwood Behavioral Health

630.837.9000

1400 Irving Park Rd.

Streamwood, IL.

www.streamwoodhospital.com

The Wellness Center

847.221.2400

1619 Colonial Pkwy.

Palatine, IL.

www.wellnessplace.org

Cancer Support Center; counseling, teen groups, resources

Vogelei Teen Center

847.885.2622

650 W. Higgins

Hoffman Estates, IL. 60169

CRISIS INTERVENTION (DCFS/SASS)

DCFS Abuse Hotline

1.800.25.ABUSE (252.2873)

SASS (Screening, Assessment and Support Services)

1.800.345.9049 This is the CARES number.

It is used to report a mental health crisis for a student with Medicaid or no insurance. The CARES line will take a phone assessment and determine if a SASS visit is appropriate.

If appropriate, a SASS agent will be at the scene within 90 minutes of the call to deem whether hospitalization is necessary. If so, they will assist in admittance. They will also determine if the student qualifies for SASS services including counseling and other intensive mental health services.

DEVELOPMENTAL DISABILITIES

Avenues to Independence

847.292.0870

515 Busse Highway

Park Ridge, Illinois 60068

www.avenuestoindependence.org

Hands on Suburban Chicago

847.228.1320

Volunteer Center

<http://www.volunteerinfo.net/>

Community Alternatives Unlimited (CAU)

773.867.4000

www.cau.org

Independent case manager services for clients w/ developmentally delays, mental illness, hearing and visual impairments

Countryside Association

847.438.8855

21154 W. Shirley

Palatine, IL. 60067

www.countrysideassn.org

Advocate center for families and clients with disabilities to help them live and work in their communities

Partners in Adult Living (Clearbrook)

847.991.4100 ext. 304

746 Vermont Ave.

Palatine, IL. 60074

www.palprogram.org

RCL/Resources for Community Living

847.701.1554

4300 Lincoln Ave. Ste. K

Rolling Meadows, IL.

www.rcl2bindependent.org

Offers adults with developmental and/or physical disabilities aid w/ housing options, individualized skill instruction and necessary support services.

The Visions Network

847.299.2000

2101 Oxford
 Des Plaines, IL. 60018
www.thevisionsnetwork.org

Program has several facets including:
 Autism, mental illness, developmental disabilities, Asberger's syndrome,
 supported employment, and community intergrated living arrangement.

DOMESTIC VIOLENCE/SEXUAL ASSAULT

Children's Advocacy Center of Northwest Cook County

847.885.0100 (day)
 847.661.3040 (24 hr)
 640 Illinois Blvd.
 Hoffman Estates, IL. 60194
<http://www.cachelps.org/>

Lifespan

847.824.4454 CRISIS Line
 847.824.0382 (Office – DesPlaines)
www.life-span.org

Northwest CASA (Center Against Sexual Assault)

847.806.6526
 415 W. Golf Rd. Ste. 47
 Arlington Heights, Il.
<http://www.nwcasa.org/>

WINGS (Women In Need Growing Stronger)

24 hour hotline 847-221-5680
 PO Box 95615
 Palatine, Il. 60095
www.wingsprogram.com

EMPLOYMENT AID

CEDA Northwest

847.392.2332
 Job Counseling/Financial Counseling
www.cedanorthwest.org
 Individual Employment Counseling, Career Building and Resource Center.

Financial Counseling, money management classes, savings program and low income tax preparation also available.

Job Corps

800.733.JOBS (5627)

<http://www.jobcorps.gov/home.aspx>

16-24 year old students whom are legal residents gain education, residential quarters, and specific training programs.

Job Search Website

www.jobweb.com

www.ajb.org

www.monster.com

www.careerbuilder.com

www.quintcareers.com

www.careermag.com

www.rileyguide.com

www.careers.org

www.chicagojobs.net

www.employment911.com

www.illinoisskillsmatch.com

www.employmentguide.com

www.jobsearch.org/IL

www.flipdog.com

www.chicagojobs.com

www.hotjobs.com

www.jobfind.com

www.suburbanchicagonews.com

www.jobs.com

FOOD PANTRIES

(CALL FIRST FOR HOURS AND QUALIFICATIONS)

CEDA Northwest

847.392.2332

1300 Northwest Hwy

Mt. Prospect, Il. 60056

http://www.cedanorthwest.org/food_youcanhelp.html

Cross and Crown

847.394.0362

1122 W. Rand Rd.

Arlington Heights, Il. 60004

Harvest Bible Chapel
80 Rohlwing rd
Rolling Meadows
847-398-7005

Lutheran Church of the Cross
847.437.5141
2025 S. Goebbert Rd.
Arlington Heights, Il. 60005

Palatine Township
847.358.6700
721 S. Quentin Rd.
Palatine, Il. 60067

Schaumburg Township
847.884.0030
1 Illinois Blvd.
Schaumburg, Il. 60192

Willow Creek Community Church
847.765.5000
67 E. Algonquin Rd.
South Barrington, Il. 60010

HEALTHCARE/INSURANCE

Dental

Dentists Accepting Public Aid

Dr. Patel - 847.985.9323 (Schaumburg)
Dr. Glinos – 847.352.8822 (Schaumburg)

1.800.DENTIST (336.8478) – will do search based on insurance criteria

DentaQuest:

<http://www.dentaquestgov.com/FindProvider/FindADentistRedirect.aspx> –
web search for dentists accepting public aid

Harper College: Dental Hygiene Clinic

Avante Center, Rm. 102

847.925.6534

<http://goforward.harpercollege.edu/about/community/dentalclinic.php>

Students in this program will see patients at a reduced rate.

See website for prices.

Palatine Township Mobile Dental Clinic

847.358.6700 (general assistance program-ask for dental clinic info)

\$20 fee each visit, will do oral exams, cleanings, cavities, extractions.

Appointments needed.

Health CareCentral DuPage OB/Gyne Assoc.

630.893.5585

630.690.0026

Carol Stream/Wheaton/Bloomingtondale

Children and Teen's Medical Center

847.895.2900

1701 Wise Rd.

Schaumburg, IL. 60193

<http://www.childrenandteens.com/>Choice Medical Center

847.358.6006

1112 W. Northwest Hwy

Palatine, Il. 60067

Reduced rate (\$25) physical exams from 1st grade – sr. in high school

Hrs. - M,T,H 2-7 and Saturday 9-12

Cook County Department of Public Health

847.818.2860

Pre-natal clinic: 847.818.2640

STD Testing Lind: 800.243.2437

2121 Euclid Ave.

Rolling Meadows, IL. 60008

<http://www.cookcountypublichealth.org/>

Regency Center

847.358.1045

782 W. Euclid Ave.

Palatine, Il. 60074

Reduced rate (\$35) student physicals

Vista Health Center Clinic

847.934.7969

1585 N. Rand Rd.

Palatine, IL. 60074

http://www.co.cook.il.us/portal/server.pt/community/ambulatory_and_community_health_network/246/network_health_centers**Insurance**Allkids

866.ALL.KIDS (255.5437)

www.allkidscovered.com

Insurance for any child living in Illinois regardless of income or citizenship.

Family Care is available for anyone over 18 if legal citizens.

Additional programs available including prescription and rebate and plans.

Public Aid

Cook County: 773.989.8296

DuPage County: 630.530.1120

Schaumburg Township 847.843.1400

DHSwww.dhs.state.il.us

This is a link to all Department of Human Services forms (general assistance, public aid, name change, etc.)

HOSPITALSAlexian Brothers Behavioral Health Hospital

800.432.5005

847.882.1600

1650 Moon Lake Blvd.

Hoffman Estates, IL. 60192

<http://www.alexianbrothershealth.org/services/abbhh/>

Holy Family Medical Center

847.298.9355

100 N. River Rd.

DesPlaines, Il. 60016

http://holyfamilymedicalcenter.reshealth.org/sub_hfmc/default.cfmLutheran General Hospital

847.723.2210

1775 Dempster Ave.

Park Ridge, IL. 60068

www.advocatehealth.com/luthNorthwest Community Hospital

800.618.1000

800 Central Rd.

Arlington Heights, IL. 60005

www.nch.orgStreamwood Behavioral Health Hospital

800.272.7790

1400 Irving Park Rd.

Streamwood, IL. 60107

www.streamwoodhospital.com**HOTLINES**National Adolescent Suicide Hotline

800.SUICIDE (784.4884)

National Crisis Line

800.785.8111

National Domestic Violence Hotline

800.603.HELP (4357)

1.800.787.SAFE (7233)

National Gay and Lesbian Hotline

800.347.TEEN (8336)

National Runaway Hotline

800.621.4000

SAFE Alternatives Information Line
800.DONT CUT (366.8288)

Teen AIDS Hotline
800.234.TEEN (8336)

LEGAL ADVICE AND ASSISTANCE

Attorney General's Office

1.800.368.1463

1.800.843.6145 (cases of abuse against developmentally delayed)

Chicago Volunteer Legal Services Foundation

312.332.1624

100 N. LaSalle St.

Chicago, Il. 60602

Lawyer referrals for free services; SSI/SSA related issues

Cook County Legal Assistance Foundation

312.341.1070

(North) 847.475.9703

111 W. Jackson Blvd. Ste 300

828 Davis St. Ste 201

Chicago, Il. 60604

Evanston, Il. 60201

Legal representation - by appointment only. Will refer to appropriate resource and location in Chicago area if unable to assist.

Guardianship and Advocacy Commission

312.793.5900

217.785.1540

Chicago Central Office

Springfield General Offices

160 N. LaSalle St.

305 Stratton Bldg.

Suite S-500

401 S. Spring St.

Chicago, Il. 60601

Springfield, Il.

Obtaining Order of Protection

If there is an arrest, contact State's Attorney Office: 847.818.2326

If no arrest, call the Civil Activator: 847.818.2426

You can file an order in person at Rolling Meadows Courthouse

2121 Euclid Ave.

Rolling Meadows, Il. 60008

LGBT SUPPORT
(LESBIAN, GAY, BISEXUAL TRANSGENDERED)

Center on Halsted
 773.472.6469
 2855 N. Lincoln
 Chicago, IL. 60657
www.centeronhalsted.org

PFLAG (Parents, Family and friends of Lesbians And Gays)
 773.472.3079
 Congregation BJBE
 901 Milwaukee Ave.
 Glenview, IL.
www.pflag.org

Pride Youth
 847.441.9880 ext. 2
 Countryside Unitarian Church
 1025 N. Smith Rd.
 Palatine, IL. 60067
<http://www.linksyouth.org/LGBTPrude/program.html>

MENTORING AGENCIES

Bridge Youth and Family Services
 847.359.7490
 721 S. Quentin Rd.
 Palatine, Il. 60067
<http://www.bridgeyouth.org>

Crossroads
 815.444.1976
 847.265.3333 (fax)
 Kent Sullens – program manager
 Mentoring and Counseling Available for McHenry, DuPage, Lake and Cook
 Counties.
 \$30.25/hr.

Kenneth Young Center

847.524.8800

1001 Rohlwing Rd.

Elk Grove Village, IL. 60007

www.kennethyoung.org

mentoring available; will accept payment from Medicaid if client is also using individual counseling.

\$40/hr.

See DCFS for mentoring services available for DCFS wards. (SOC Program)

PREGNANCY/CHILDCARE

Action for Children

773.687.4000

www.actionforchildren.orgCEDA Northwest – WIC Office

847.392.2332

1300 N. Northwest Hwy

Mt. Prospect, IL. 60056

www.cedanorthwest.orgChild Support Assistance

800.447.4287

Children's Advocacy Center of Northwest Cook County

847.885.0100

<http://www.cachelps.org/about.htm>Cook County Child Care Resource

773.769.8000

PHD (Preservation in Human Dignity)

847.359.4919

37 N. Plum Grove Rd.

Palatine, IL. 60067

Pregnancy testing, parenting classes, counseling, referrals, confidential

<http://sphd.org/about-us/>Prep 4 Life

847.755.5635 – Andres Acosta

email @ aacosta@d211.org

Shelter, Inc. – Healthy Families

847.255.8060

155 W. Eastman Ave.

Arlington Heights, IL. 60007

Home visit program for first time moms; newborns – 5 yrs.

<http://www.shelter-inc.org/>Social Security Referral for Baby

800.772.1213

SHELTERS/HOUSING AIDCatholic Charities

847.376.2100

www.catholiccharitiesusa.org

Family Shelter

CEDA Northwest

847.392.2332

1300 Northwest Hwy.

Mount Prospect, Il. 60056

www.cedanorthwest.org

Wright House Program (pay below market rent, stay up to 2 yrs)

Jefferson House Program (pay 30% of adjusted income for rent up to 2 yrs)

The Harbour (shelter-adolescent girls, also have supervised homes for men and women ages 17-21)

847.297.8540

1480 Renaissance Dr.

Park Ridge, Il. 60068

http://theharbour.org/index.php/pages/About_Us.htmlPADS (aka Journeys from PADS to Hope) (shelter- families)

847.963.9163

1140 E. Northwest Hwy.

Palatine, Il.

22 shelters open from 7pm-7am starting 10/01 – 04/30 including holidays.

Shelter Inc.

847.255.8060

1616 N. Arlington Heights Rd. (central office)

Arlington Heights, Il.

Boy's and Girl's shelters – 3 facilities; OAG, Boy's Grp Home, Jennings Home

www.shelter-inc.org

WINGS (Women in Need Growing Stronger) (women's shelter)
See Info Above in Domestic Violence
<http://www.wingsprogram.com/about.htm>

SUBSTANCE ABUSE **ASSESSMENTS/COUNSELING/RESIDENTIAL**

Alateen
312.890.1141

Alexian Brothers Behavioral Health Hospital
847.755.8080
800.432.5005 (free evaluation)
1650 Moon Lake Blvd.
Hoffman Estates, Il. 60194
<http://www.alexianbrothershealth.org/services/abbhh/center-addiction-medicine/>

Alcoholics Anonymous
312.346.1475

Arlington Center for Recovery
847.427.9680
1655 S. Arlington Heights rd.
Arlington Heights, Il. 60005
Counseling, inpt program, DUI program
<http://arlingtoncenterforrecovery.net/>

The Bridge Youth and Family Services
847.359.7490
721 S. Quentin Rd.
Palatine, Il. 60067
www.bridgeyouth.org
Assessments and Treatment

Families and Adolescents in Recovery (F.A.I.R)
847.359.5192
1995 Hicks Rd.
Rolling Meadows, IL.
Counseling, groups, screens
<http://www.fairkids.com/>

Gateway Foundations

847.356.8292/8205

25480 Cedar Crest Ln

Lake Villa Il. 60046

Counseling, inpt, outpt, DUI program

<http://recovergateway.org/>Keys to Recovery

847.298.9355

100 N. River Road

Des Plaines, Il. 60016

www.keystorecovery.org

Detox, Rehab, Residential

Narcotics Anonymous

708.848.4884

www.chicagona.orgRosecrance Substance Abuse Treatment Center

815.391.1000

3815 Harrison Ave.

Rockford, Il. 61108

<http://rosecrance.org/>Salvation Army- Family Services Community Counseling

847.885.4060

1 Illinois Blvd.

Hoffman Estates, Il. 60194

www.salarmychicago.org

Counseling, inpt, DUI programs

Schaumburg Teen Center

847.524.3388

231 S. Civic Dr.

Schaumburg, Il. 60193

Services 12-19; counseling, detox, inpt, DUI programs

<http://www.ci.schaumburg.il.us/HHS/Teen/Pages/TeenCenter.aspx>

.

TOWNSHIPS/VILLAGE INFORMATION

Townships:

Palatine Township

847. 358.6700

www.palatinetownship.com

Schaumburg Township

847.884.0030

www.schaumburgtownship.org

Villages:

Arlington Heights 847.368.5000

Barrington 847.304.3400

Hoffman Estates 847.882.9100

Inverness 847.358.7740

Palatine 847.358.7500

Rolling Meadows 847.394.8500

Schaumburg 847.895.4500

South Barrington 847.381.7510